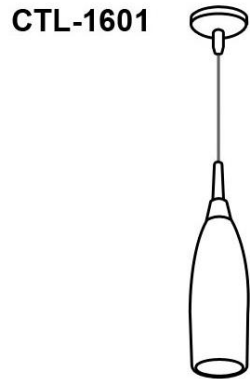


*Instructivo solo como referencia de instalación





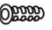




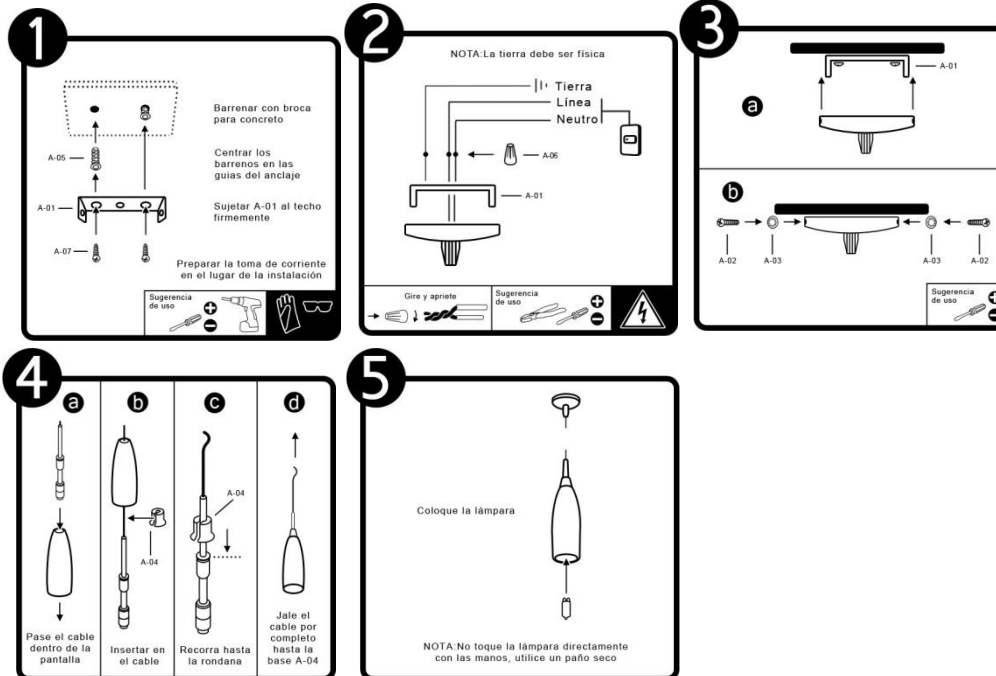
PRECAUCIÓN:

1-Desconecte la fuente de energía eléctrica durante la instalación y antes de darle servicio.

LISTA DE PARTES:

Accesorios Anclaje

-  A-01 Anclaje x 1
-  A-02 Tornillo x 2
-  A-03 Rondana x 2
-  A-04 Base Pantalla x 1
-  A-05 Taquete x 2
-  A-06 Conector rápido x 3
-  A-07 Pija x 2



RECOMENDACIÓN: Favor de consultar el instructivo impreso que viene dentro del empaque del producto.